

Update on GMI Activities

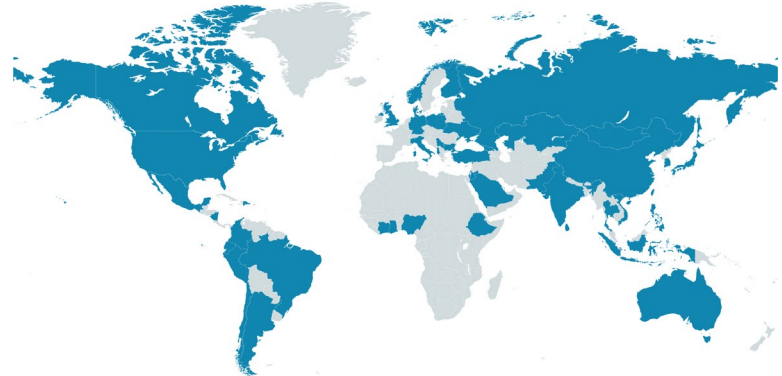
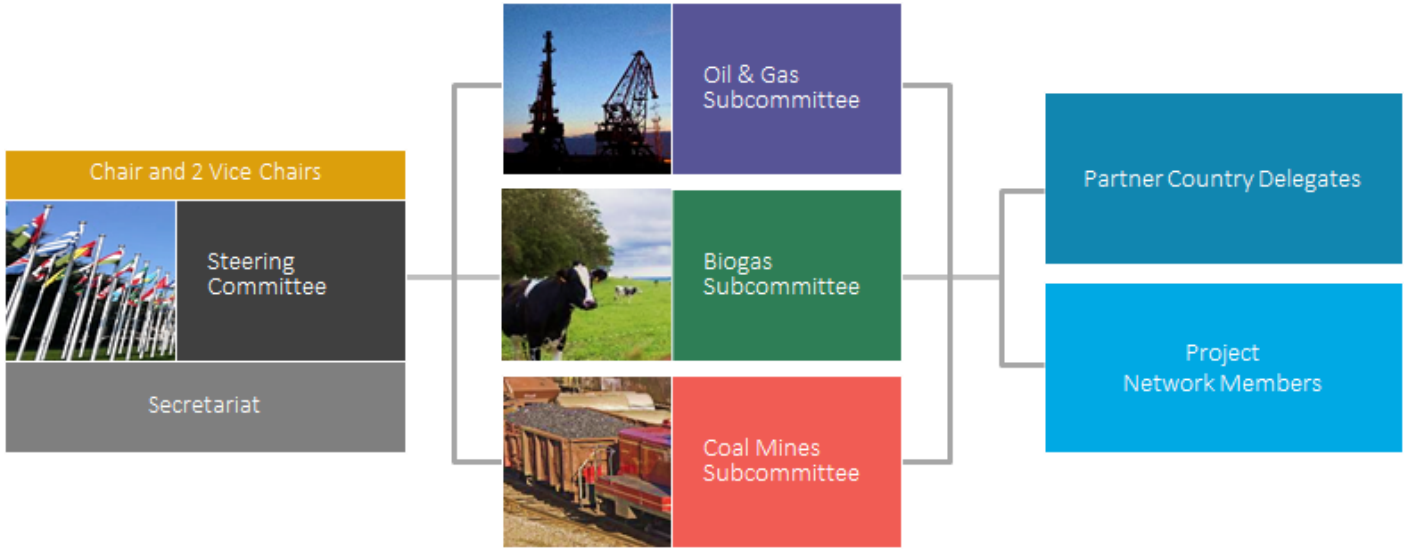
Monica Shimamura
Director, GMI Secretariat



GMI Structure and Participants

GMI is an international public-private partnership focused on reducing barriers to the recovery and use of methane as a valuable energy source.

- 46 Partner Countries
- 700+ Project Network members
- Alliances with international organizations focused on methane recovery and use



GMI Partner Countries represent approximately 75% of methane emissions from human activities.

GMI Accomplishments Since 2004



Grown from 14 to **46 Partner Countries**



Leveraged more than **\$650 million** in funding for projects and training



Gained more than **700 Project Network** members from around the world



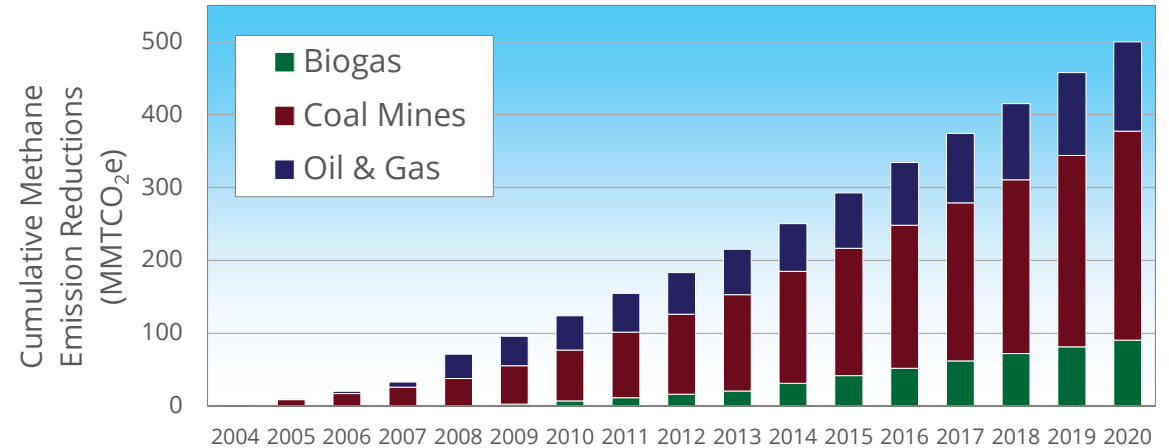
Conducted **hundreds** of assessments, pre-feasibility studies, feasibility studies, study tours, and site visits



Provided trainings for more than **50,000 people** in methane mitigation



Developed more than **60 tools and resources** for methane mitigation



500 MMTCo₂e

methane emission reductions since 2004, approximately equivalent* to the CO₂ emissions from any one of the following:



56 Billion
gallons of gasoline
consumed



550 Billion
pounds of coal
burned



60.8 Trillion
smartphones
charged

* [epa.gov/energy/greenhouse-gas-equivalencies-calculator](https://www.epa.gov/energy/greenhouse-gas-equivalencies-calculator)

GMI

“By the Numbers” for 2021

- Leveraged virtual platforms to maintain and increase engagement with stakeholders
- Expanded direct communications with social media
- Promoted GMI’s technical expertise

In FY 2021:

11
countries

supported activities where more than

1,100
people

received a total of approximately

1,000
hours

of training about reducing methane emissions and capturing methane for productive uses



Capacity Building/Information Sharing
fostering best practices

3

Workshops/Trainings

European Commission, United States, Partnership-wide

9

Manuals/Websites/Other Outreach

All Partners



Assessments

identifying opportunities for emission reductions

6

Reports/Tools/Models

United States, Partnership-wide

1

Study Tours/Other Technical Assistance

India



Partnerships

building relationships to foster action

12

GMI Meetings (Steering Committee/Subcommittees)

Online

2

Conferences

Partnership-wide Online

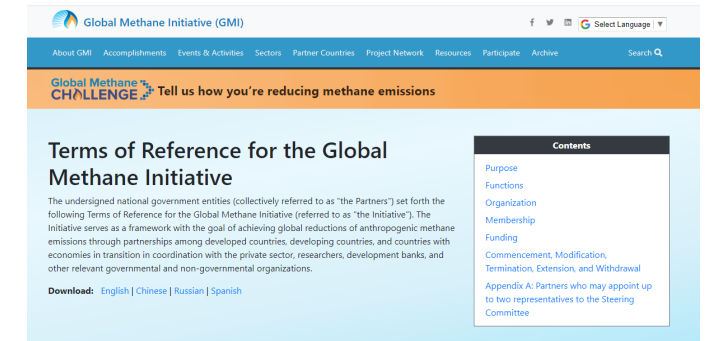
18

Webinars, Informational Meetings, and Presentations

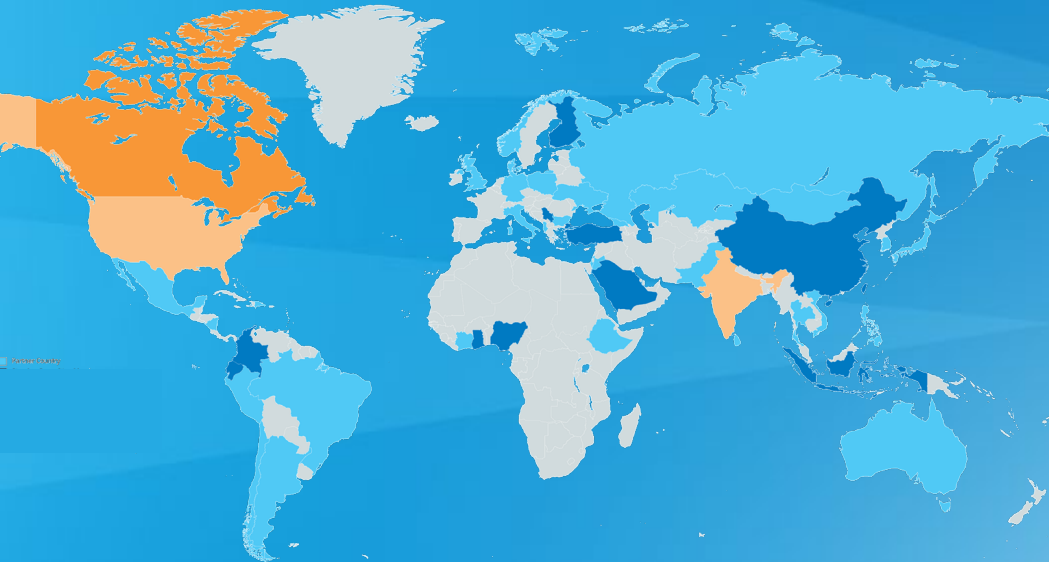
Colombia, Indonesia, Poland, Serbia, Ukraine, United States, Partnership-wide

2021 Highlights

- Rechartered GMI through May 2031
 - Raise ambition over next 10 years
 - Elevate international awareness of the critical need to take action now to reduce methane emissions
- Published New Terms of Reference (June 2021)
- Hosted “A Call to Action on Methane”
 - Influential global leaders on methane
 - More than 360 attendees, materials available online
- Developed new Steering Leadership model



Refreshed Steering Committee Participation



Chair and Vice Chairs Model

- The Steering Committee makes appointments to each position by consensus for a 2-year term
- Chair provides overall leadership for the Initiative
- Vice Chairs offer additional leadership to delegate responsibilities and improve coordination with GMI Subcommittees, delegates, and strategic partners



Acting Chair, Ms. Laura Farquharson
Director-General of Legislative and Regulatory Affairs, Environment and Climate Change Canada



Vice Chair, Mr. Vinod Kumar Tiwari
Additional Secretary, Ministry of Coal, Government of India



Vice Chair, Mr. Tomás Carbonell
Deputy Assistant Administrator, Office of Air and Radiation, U.S. Environmental Protection Agency

Steering Committee Members

- | | |
|-----------------|----------------------|
| ■ Canada | ■ China |
| ■ India | ■ Colombia |
| ■ United States | ■ Ecuador |
| | ■ Finland |
| | ■ Ghana |
| | ■ Indonesia (NEW) |
| | ■ Nigeria |
| | ■ Saudi Arabia (NEW) |
| | ■ Serbia (NEW) |
| | ■ Turkey (NEW) |

Steering Committee and GMI Partner Countries

Steering Committee Leadership

-  Canada (Chair)
-  India (Vice Chair)
-  United States (Vice Chair)

Steering Committee Members

- | | |
|--|---|
|  China |  Indonesia |
|  Colombia |  Nigeria NEW |
|  Ecuador |  Saudi Arabia NEW |
|  Finland |  Serbia NEW |
|  Ghana NEW |  Turkey |

Other GMI Partner Countries

- | | | |
|---|---|---|
|  Albania |  Georgia |  Pakistan |
|  Argentina |  Germany |  Peru |
|  Australia |  Israel |  Philippines |
|  Brazil |  Italy |  Poland |
|  Bulgaria |  Japan |  Republic of Korea |
|  Chile |  Jordan |  Russia |
|  Cote d'Ivoire |  Kazakhstan |  Sri Lanka |
|  Denmark |  Mexico |  Thailand |
|  Dominican Republic |  Mongolia |  Ukraine |
|  Ethiopia |  Nicaragua |  United Kingdom |
|  European Commission |  Norway |  Vietnam |

Steering Committee Priorities

- Provide support to countries that are working to aggressively reduce methane emissions, including signatories of the Global Methane Pledge
- Implement GMI Action Plan
 - Help Subcommittees enhance participation of Partner Country delegates
- Host the Global Methane Forum (October 2022 in Washington, DC)
- Leverage strategic partnerships to improve collaboration – for example, with United Nations Economic Commission for Europe (UNECE) and Climate and Clean Air Coalition (CCAC)



Opportunities for the Coal Mines Subcommittee

- Expand Subcommittee membership
 - Identify sector-specific, regional, and informal organizations to partner with
- ★ Focus on opportunities to deliver technical solutions for methane mitigation

Global Methane Pledge



Fast action on methane to keep a 1.5°C future within reach

- GMI is a key supporter of the Pledge
- Countries joining the Pledge commit to:
 - Work to achieve a **collective goal of reducing global methane emissions by at least 30% from 2020 levels by 2030**
 - Move towards using the highest tier good practice inventory methodologies, and to provide greater transparency in key sectors
- **111 countries** have signed, representing over 40% of global methane emissions
 - 35 GMI Partner Countries

Source: <https://www.globalmethanepledge.org/>

Thank you!

Monica Shimamura

Director, GMI Secretariat

shimamura.monica@epa.gov

secretariat@globalmethane.org



[**globalmethane.org**](http://globalmethane.org)

